

**MASTER**  
CONICAL ENGINEERING

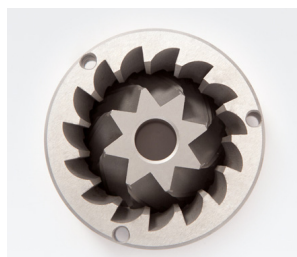
# E10 Master Conic OD

## INNOVATION INTERSECTS TRADITION

MOTOR 950 W  
FRESAS CÓNICAS Ø 68 MM

### KEY SPECIFICATIONS

Motor output	950	W
Revolutions per minute	340	rpm
Ø Burrs	Conic 68	mm
Espresso point production	17	Kg/h
Time x dosis Espresso (7gr)	1,6	s
Hopper capacity	1.700	gr
Height x width x depth	715 x 215 x 400	mm
Net weight	20,50	Kg



### KEY FEATURES

- ◆ “Parallel System” grind regulator lock
- ◆ Micrometric regulator
- ◆ 1 or 2 On-Demand ground coffees
- ◆ Precise dosing
- ◆ Touch control screen
- ◆ Double fan
- ◆ Three positions switch with by-pass
- ◆ Universal adjustable height porta filter holder

### ELECTRONIC FEATURES

- ◆ Multilanguage Display
- ◆ 3 Modes: Pre-selection - Automatic - Instant
- ◆ Protection menu access by Password
- ◆ Total and Partial shot counter
- ◆ Notice of change of Burrs
- ◆ Date and time
- ◆ Quantity lock configurable by weight ground

